



PIPP®

MOBILE STORAGE SYSTEMS INC.

HORTICULTURE

**Cultivation
Elevated™**

pipphorticulture.com





The future of cannabis cultivation is maximizing space and efficiency with mobile vertical cultivation racks.

We take you there by taking you up.

As LED technology continues to improve and outperform traditional HPS lighting, single-tier facilities are giving way to multi-tiered rolling vertical farms. **Why?**

Vertical farming = greater output.

Reduction of operating costs.

Increases overall revenue per square foot by as much as 3x.

The question isn't if you should make the change. It's who can best help you get the job done.

Pipp Horticulture is the leading provider of movable vertical racking systems that maximize cultivation space.

With nearly 40 years of experience serving the nation's top retailers, we've engineered lower-cost solutions that can exponentially grow your production without adding an inch to your footprint.

Double or triple your canopy by maximizing your cubic grow space with more efficient workflow.

Our mobile multi-level rack and tray system is the most cost-effective investment you can make.

○ Efficient

○ ADA & Seismic Compliant

○ Safe

○ Durable

○ Sustainable

○ Includes Full Design
& Installation

○ Easy to Clean

○ Lightweight

Not only can you produce more, you'll save more.

Our prices are lower than the industry standard. That's because of our decades of experience in the price-sensitive retail market, factory direct sales channel, and an efficient team of licensed installers.

Made in the USA. Factory Direct.

Based in Grand Rapids, Michigan, Pipp serves cannabis cultivators with the same expertise that forged its dominance in the retail industry.

You deal directly with us. We design specifically for you. No wasted resources. No mark-ups. You win.



Marine Grade Aluminum

We build our carriages and track with non-corrosive high tensile aluminum extrusions and coated rust-resistant rails to provide premium strength in a lightweight, durable system.



Seismically Approved

California might bear the biggest risk for earthquakes, but natural disasters can strike anywhere. We mitigate that risk with ADA and seismic code compliance.



Mobile Flexibility



We do offer fixed racks, however nearly all of our customers enjoy the benefits of going mobile. Choose from our manual or mechanical-assisted systems to easily access all parts of your garden and enjoy a more efficient workflow.





James
Cunningham



FOG CITY FARMS



Watsonville, CA

Case Study

Problem

Needed

greater

output per
square footage

move

aisles for better
workflow

grow

vertically to
maximize space

Planning

Our team of in-house designers, engineers, and experienced cultivation experts designed a mobile cultivation system that integrated with the other components necessary for successful operation, like lighting, airflow, irrigation and drainage systems.

Solution

Pipp provided multi-level mobile racks that tripled the square footage available for cultivation.

Benefits

Achieved a more sustainable and environmentally conscious platform.

Higher yield with less overhead costs.

Increased efficiency and streamlined workflow.

“

The carriages make all parts of the garden easily accessible and are almost effortless to move.”

”





“Pipp Mobile
has enabled us
to have a highly
efficient, durable,
multi-layered
platform.”

JAMES CUNNINGHAM
FOG CITY FARMS



“ Every facility and room we develop from here on out will use Pipp double-stack rolling benches and LED's. ”

Dr. Allison Justice
VP Cultivation
OutCo

“ I can't imagine better customer service than what we received from the crew that Pipp provided. We tripled our square foot of canopy and in so doing we will be able to pay this off in one harvest. ”

Lance Savage
General Manager
Clarity Gardens



Product Offerings



**Mobile Vertical
Grow Rack**

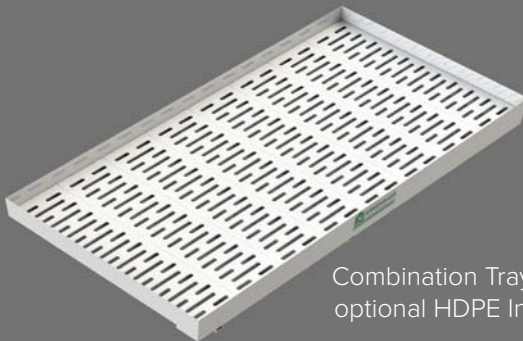


Horticulture Carts

Combination Tray



- Tray can be used for drip-to-drain irrigation or ebb & flow
- 11ga aluminum with powder coat finish
- Built in trough for easy drainage
- Optional HDPE Inserts are fungal-resistant and anti-microbial
- Capable of flooding to a depth of 4" maximum (without Inserts)
- Built-in struts provide support and attachment points for lights, air circulation, and plumbing
- Flood fill location can be added at most convenient location by G.C. or customer
- Available in: 8'x4', 8'x3', 4'x4', 4'x3'



Combination Tray with
optional HDPE Inserts

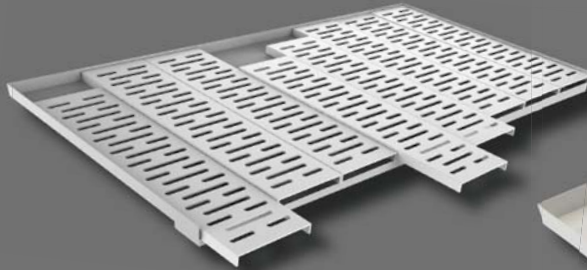


Patent Pending

Drip-To-Drain Tray



- Tray is designed for use in a drip-to-drain irrigation style
- 11ga aluminum with powder coat finish
- Built in trough for easy drainage
- Optional HDPE Inserts are fungal-resistant and anti-microbial
- Inserts easily slide out for access to rear plants and cleaning
- Built in struts provide support and attachment points for lights, air circulation, and plumbing
- Available in: 8'x4', 8'x3', 4'x4', and 4'x3'



Drip-To-Drain Tray with
optional HDPE Inserts

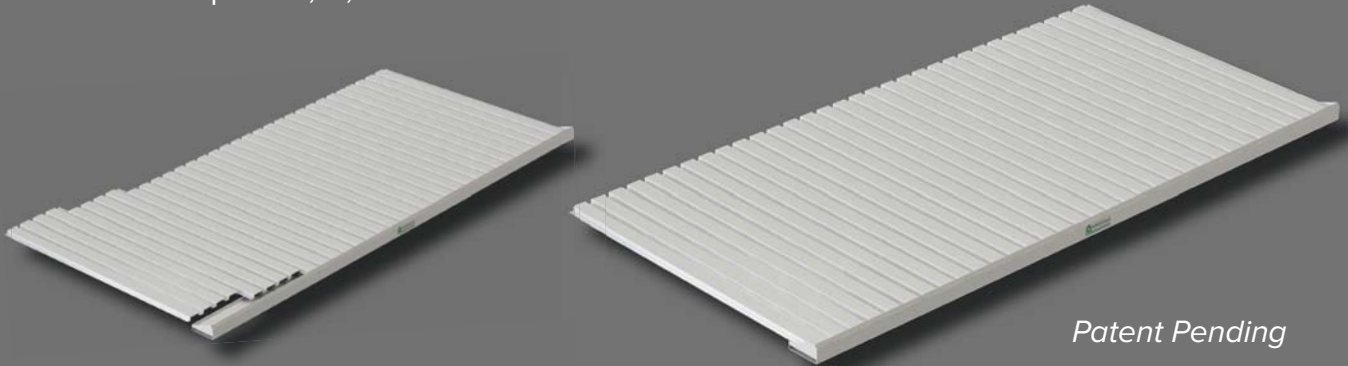


Patent Pending

Corrugated Tray



- Tray is designed for use in a drip-to-drain irrigation style
- Galvanneal steel construction with a powder coat finish
- The powder coat finish is anti-microbial, fungal-resistant, and UV-stable
- The modular panel design provides a low profile, leak-resistant surface with easy accessibility for cleaning
- Includes powder coated steel supports for attachment points for lights, air circulation, and plumbing
- Sizes Available:
 - Lengths: 4', 5', 6' and 8'
 - Depths: 2', 3', and 4'



Patent Pending

ABS Combination Tray



- Tray can be utilized for drip-to-drain or ebb & flow irrigation styles
- Durable ABS construction
- Thermoformed with a Korad cap to provide UV-stability, anti-microbial and fungal-resistant properties
- Tray sits level to provide plants with a flat growing surface
- Network of sloped canals within the tray ensure proper drainage away from plants to drain location
- Easy cleanup
- Available in: 8'x4' and 4'x4'



Patent Pending

Vertical Grow Rack

Racks available up to 23' high.
(Racks higher than 23' require engineering approval.)

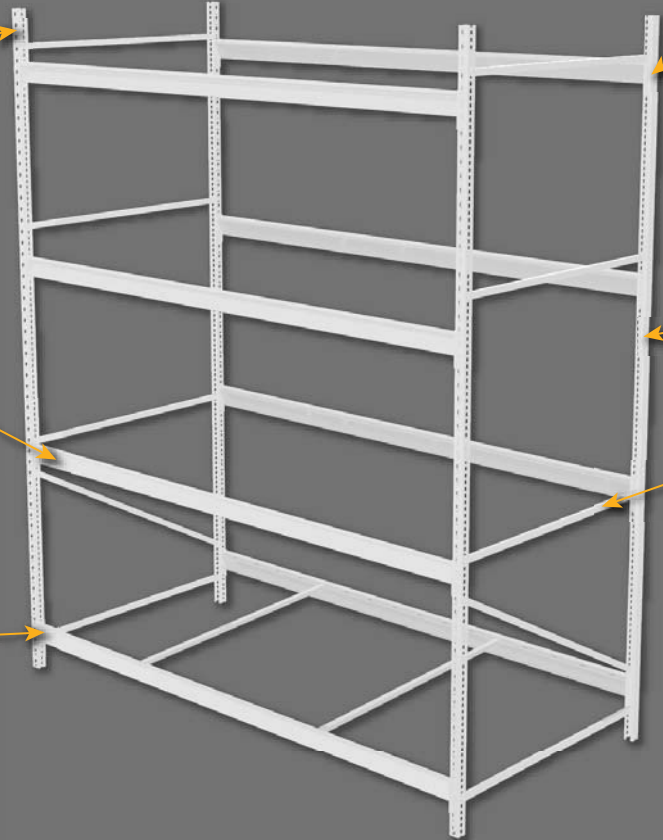
White Powder Coat is UV-stable and contains anti-microbial and fungal-resistant additives

Beams can support 2,150 lbs

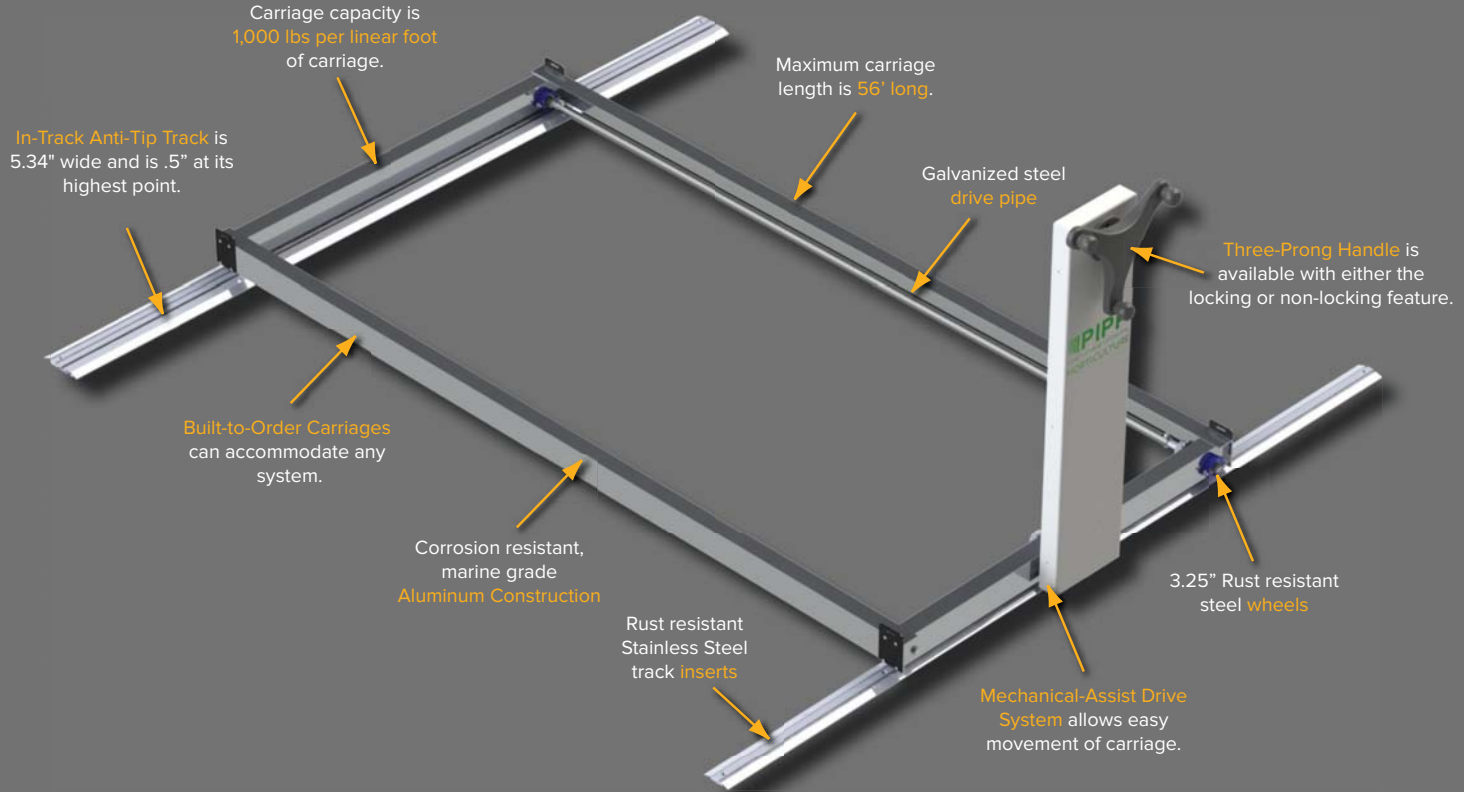
High capacity shelving constructed from high strength steel

Uprights can support up to 17,000 lbs

Supports a wide variety of grow trays, dry & cure rack accessories for LED lights, and other utilities



Mechanical-Assist Carriage



Drying Rack

Description:

The Drying Rack is designed to accommodate hanging plants in order to dry them out for further processing.

Dimensions:

- 24"W x 51.5"L x 76.4"H
- Top 2 shelf spacing: 21.625"
- Bottom shelf spacing: 27.5"

Material and Finish:

- Mild steel construction
- Frame finish: white powder coat
- Hang Rack finish: lacquered zinc

Features and Specifications

- Ships assembled
- Hang Racks lock in 3 positions: horizontal, vertical, and at 30°
- Multiple racks nest together when not in use

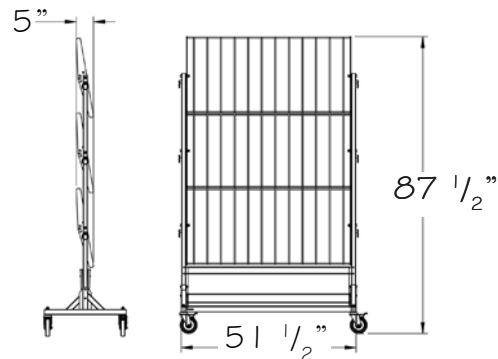


30° Tilted Shelves

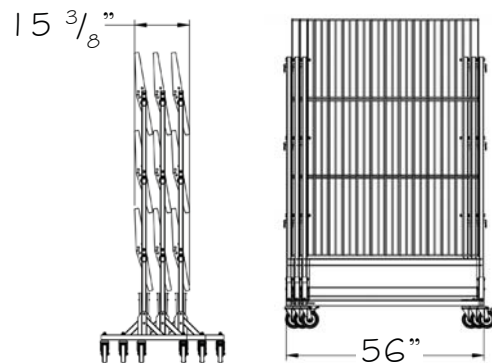


Drying Rack - Nested

**Single
Unit**



**3 Units
Nested**



Multi-Function Cart

Description:

The Multi-Function Cart is designed to increase efficiencies and streamline the work flow during the cultivation process.

Dimensions:

- 24"W x 54"L x 80.5"H

Material and Finish:

- Mild steel construction
- Frame finish: white powder coat
- Top Hang Rack finish: lacquered zinc

Features and Specifications

- Ships knocked down
- Top hang rack level for drying
- Second level drying tray
- Third level solid drip-to-drain irrigation with ebb & flow port
- Removable base shelf for easy cleaning
- 1,000 lbs cart capacity
- Easily configurable using any combination of shelves



Work Station

Description:

The Work Station is designed to streamline all post-harvest functions to a central location. It comes equipped with a drying hang bar and 5" casters.

Dimensions:

- 24"W x 48"L x 75"H

Material and Finish:

- Mild steel construction
- Lacquered zinc finish

Features and Specifications

- Ships knocked down
- Height adjustable work surface
- Optional 2" high shelf ledges, collection bin, and hardware basket

Posts
1" positioning grooves

2"H Shelf Ledges (optional)
Installed magnets for shelf positioning and easy removal

Hardware Basket (optional)
7.5"W x 7.5"L x 4.8"H

Casters
(2) 5" swivel
(2) 5" brake

Hang Bar
11.25" overhang

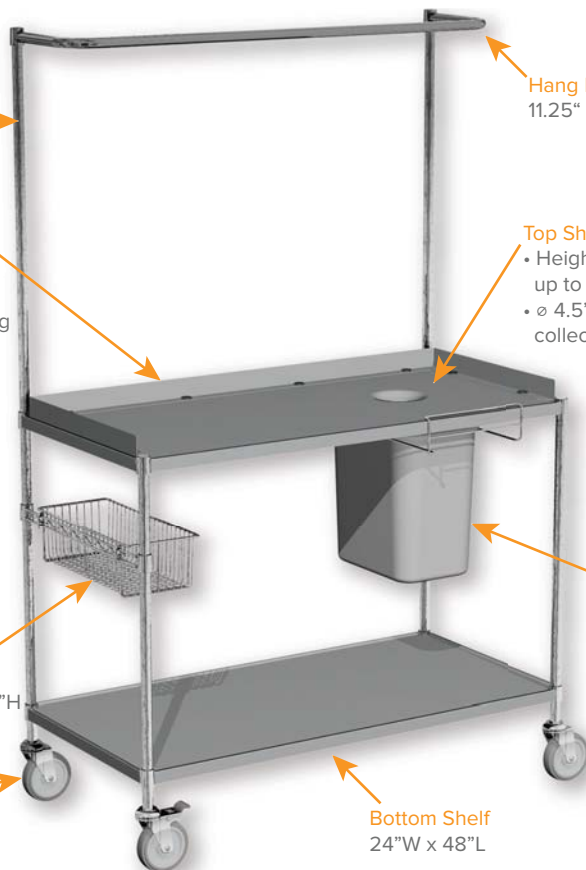
Top Shelf

- Height adjustable up to 39"
- \varnothing 4.5" radiused collection hole

Collection Bin (optional)

- Removable
- 7 gallon
- Plastic

Bottom Shelf
24"W x 48"L



Z-Rack



Description:

The RGR-350 Z-Rack delivers ease of use, safety, and long life. Super heavy-duty construction combined with standard 5" swivel non-marring casters provides a 1,000 lb. total load capacity. Z-Base allows for nesting when not in use.

Dimensions:

- RGR-350 Series: 48"L x 24"W x 72"H
- RGR-550 Series: 62 1/4"L x 24"W x 72"H

Material and Finish:

- Hang rail constructed of 14-gauge steel
- 1 1/2" Square steel tubing base
- Chrome uprights and hang rails

Features and Specifications

- Welded gussets at Z base corners for added strength
- Load capacity – up to 1,000 lbs.
- Ships knocked-down
- Designed for easy assembly
- RGR-350 series can ship UPS

Z-Rack



Nested Z-Racks



**Z-Rack with Optional
Middle Bar**



**Z-Rack with Optional
Bottom Shelf**

Wire Cart



Description:

These durable and highly functional carts are ideal for mobile storage requirements. The open wire construction minimizes dust/dirt accumulation and maximizes airflow as well visibility.

Description:

Lengths: 24", 30", 36", 42", 48", 60", and 72"

Widths: 18", 21", and 24"

Heights: 63" and 74"

Each kit includes the following:

- 4 Shelves with split sleeves
- 4 Posts
- 5" Heavy-duty non-marring swivel casters
- Posts are numbered in 1" increments for ease of assembly

Features and Specifications

- Easy to transport and maneuver
- Load capacity – up to 1,000 lbs.
- No tools required
- Ships knocked-down
- Most sizes can ship UPS



Available as a
Security Cage

C-Thru Lockers



Single-Tier



Double-Tier

C-Thru Lockers offer a unique approach to storing personal belongings while allowing others to visually inspect the contents without the need to open the locker. They are roomy enough for just about any secured storage application.

Details



Easily integrated with irrigation & drainage systems, lighting, airflow, and other elements necessary for operations.



Standard products in the stocking program ship within approximately 4 weeks.



Installation fully included with purchase and performed by Pipp's certified, licensed team.



NSF certified product solutions available.



No facility is too large or too small.



Low Cost. High Value. Dependable and Trusted.

FAQs



How big can the racks be?

Mechanical-Assist Cultivation Systems can be built up to 23' high and 56' long. Systems larger than this would require engineering approval.



What kind of track and rails are used? How are they installed?

Our unique track and rail system is only ½" high and includes an anti-tip feature to comply with seismic codes. We level and anchor the rails into concrete floors for a high quality, safe installation that performs for decades.



How about irrigation and drainage?

Irrigation and drainage equipment is typically provided by the end user. Our systems can be designed to accommodate a wide range of requirements.



Leading Provider of Cannabis Cultivation Systems

Grow More™.

Call Pipp today!



(616) 988-4044



www.pipphorticulture.com



www.greenhausinc.com



info@pipphorticulture.com



[@pipphorticulture](https://www.instagram.com/pipphorticulture)